

A photograph of four graduates in black caps and gowns, seen from behind, standing in a row. They are wearing black mortarboard caps with red tassels. The background is a blurred outdoor setting with green trees and a building. A semi-transparent dark blue diamond shape is overlaid on the image, containing the text.

ARMWOOD COLLEGIATE ACADEMY

01

Collegiate Academy Information



Armwood High School is partnered with Hillsborough Community College (HCC)

- Students attend Armwood and begin taking college classes 9th grade!
- Graduate with both a HS Diploma and Liberal Arts AA degree
- Free tuition and books
- Two-year college degree = \$\$\$\$ SAVED!



Program Overview

Students must enter with a 3.0 (HS) GPA

All Collegiate/DE courses are taken on Armwood's campus and are taught by HCC-certified instructors with Master's Degrees

Cannot be accepted into the program after freshman year





Points of Pride

National Magnet School Award Winner (2015, 2018, 2019, 2020)

Students from over 25 Public, Private and Charter middle schools have been accepted into the Collegiate Academy Program.



Collegiate Academy students are represented in every sport and/or club at Armwood.

9

| Semester One | Semester Two |
|---------------------------------------|-------------------------------------|
| English 1 Honors | English 1 Honors |
| Geometry Honors or Algebra 2 Honors | Geometry Honors or Algebra 2 Honors |
| AP Environmental Science | AP Environmental Science |
| SLS 1106- First Year Experience (DE) | Research I |
| REA 2505- Vocabulary Improvement (DE) | CGS 1000- Intro to Computers (DE) |
| High School Elective | High School Elective |
| High School Elective | High School Elective |

10

| Semester One | Semester Two |
|-------------------------------------|---|
| English 2 Honors | English 2 Honors |
| Algebra 2 Honors or Pre-Calculus | Algebra 2 Honors or Pre-Calculus |
| BSC 1005/ Lab- General Biology (DE) | Biotech Honors |
| AP World History | AP World History |
| PSY 2012- General Psychology (DE) | SPC 1608- Public Speaking (DE)- 0.5 PFA |
| HCC Elective (DE) | High School Elective |
| High School Elective | High School Elective |

11

| Semester One | Semester Two |
|---------------------------------------|---|
| ENC 1101- Freshman English I (DE) | ENC 1102- Freshman English II (DE) |
| Pre-calculus or AP Calculus AB | Pre-calculus or AP Calculus AB |
| CHM 1020C- Chemistry and Society (DE) | CHM 1032/Lab- Chemistry Health Science (DE) |
| AMH 2010- Early American History (DE) | AMH 2020- Modern American History (DE) |
| 3 High School Electives | 3 High School Electives |

12

| Semester One | Semester Two |
|----------------------------------|--------------------------------------|
| MAC 1105- College Algebra (DE) | STA 2023- Elementary Statistics (DE) |
| REL 2300- Intro to Religion (DE) | PHI 1010- Intro to Philosophy (DE) |
| IDS 2891- Connections (DE) | Career Research and Decision Making |
| POS 2041- US Government (DE) | Economics Honors |
| High School Elective | HCC Elective (DE) |
| High School Elective | High School Elective |

ADDITIONAL HIGH SCHOOL GRADUATION REQUIREMENTS:

- 1 CREDIT IN HOPE (PE)
- 0.5 PERFORMING FINE ARTS
- 2 YEARS OF THE SAME WORLD LANGUAGE

Collegiate Supports

TELP

- Transportation Extended Learning Program
- Tutoring from Collegiate Teachers
- Access to Computer Lab & Printer
- Extra Math & Science tutoring for elearners this year!

Collegiate Resource Room

- Computer Lab & Printers
- Fridge
- 3 Microwaves
- Opportunities for Collaboration and Socialization

Collegiate Specific Guidance Support

- Emily Lippincott
- Patrick Kelly (Textbooks & Academic Coaching Support)

Eligibility

GPA: Grades earned in core subjects from 7th grade and part of 8th grade (language arts, math, science and social studies)

Test scores: Standardized test scores from 6th and/or 7th grade

Collegiate Academy applicants: Students must have taken and passed Algebra I or Algebra I Honors

To remain in The Collegiate Academy, students must: 1) have college-ready test scores on the PERT, the SAT, or the ACT, and 2) maintain a 3.0 unweighted high school GPA and a 2.0 HCC GPA in dual enrollment courses.

Transportation

Not Zoned for AHS: Transportation is limited (as indicated on the magnet application). There is no neighborhood bus assigned to transport students to and from Armwood if they are outside of the neighborhood school zone. Students may utilize the "hub" system, but are required to provide their own transportation to and from the hub.

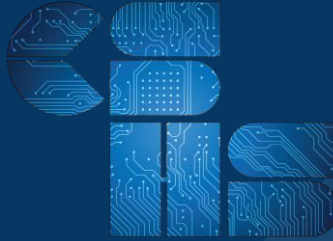
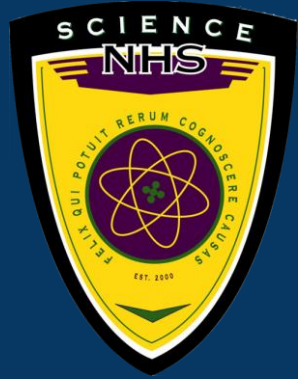
Hubs:

Bloomington High School
Brandon High School
Newsome High School
Plant City High School
Strawberry Crest High School
Tampa Bay Tech



02

Clubs & Programs





03

Let's Hear from
Our Seniors!



SCAN ME

The Magnet Application is
OPEN! Apply tonight!
Application closes
11:59 pm on December 11!



Thanks!

Contact Information

Stacey Bruton, Magnet Lead

@ArmwoodAcademy

(813) 485-4245

stacey.bruton@sdhc.k12.fl.us

